

R-Control SIPs build Lightning Fast

• Labor Case Studies •

Want to learn more about designing and building with lightning speed? Contact R-Control Building Systems toll free 877-R-Control (877-726-6876). Visit us on the web www.r-control.com



Labor Case Study I

Project: Labor time estimate for setting R-Control SIP wall panels used to build the structural and insulated envelope of a 3978 square foot duplex.

R-Control SIPs: Panels were supplied from factory: Cut to length and width. Spline and plate pockets were factory cut.



Scope of work - Walls:

1. 312 lineal feet of 8 ft. high walls - installing 2x plate material in factory cut openings and header openings, top plate.
2. Bottom sill plate over conventional floor system, as in SIP-105.
3. R-Control SIP was set over sill plate, as in SIP-105.
4. Panel to panel connection was done using surface spline, as in SIP-102 and SIP-102d.
5. Corner connection was done, as in SIP-103.
6. Door, window openings field plated, as in SIP-114 and SIP-115.
7. Four (4) man crew was used to hand set panels and execute details with assistance of crane.



Results - Walls

- Four (4) men spent nine (9) hours 45 minutes or thirty-nine (39) man hours to set 312 lineal feet of wall.
- 8 lineal feet of installed R-Control SIP per man hour
- **64 square feet of installed R-Control SIP per man hour.**



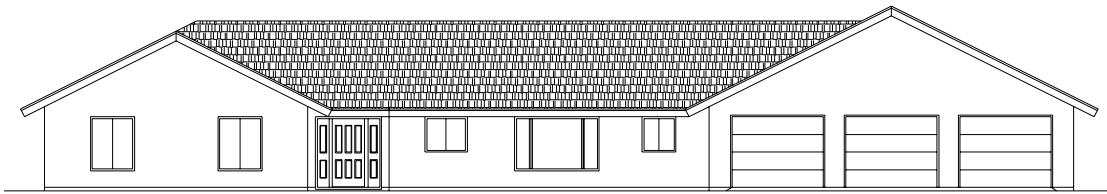
Labor Case Study 2

Project: Labor time estimate for installing R-Control SIP wall panels used to build the structural and insulated envelope of a 3652 square foot single story home.

R-Control SIPs: Panels were supplied from factory: Cut to length, width, and gable configuration. Door and window openings were cut. Spline and plate pockets were factory cut.

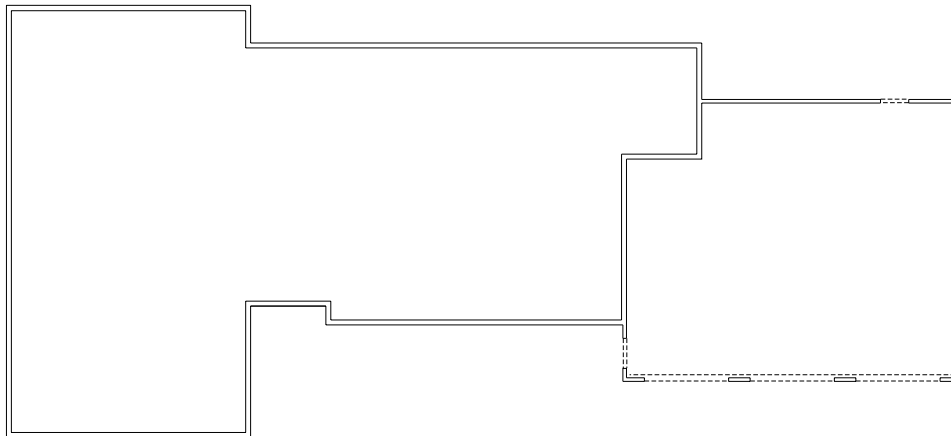
Scope of work - Walls:

1. 348 lineal feet of 8 ft. high walls - installing 2x plate material in fourteen factory cut openings and nine header openings, top plate.
2. Treated plywood with bottom sill plate, as in SIP-104a.
3. R-Control SIP was set over sill plate, as in SIP-104a.
4. Panel to panel connection was done using surface spline, as in SIP-102.
5. Corner connection was done, as in SIP-103. (Sixteen corners)
6. Door, window openings field plated, as in SIP-114, SIP-115 and SIP-112c.
7. Four (4) man crew was used to hand set panels and execute details.



Results - Walls

- Four (4) men spent twelve (12) hours or forty-eight (48) man hours to set 348 lineal feet of wall.
- 7.3 lineal feet of installed R-Control SIP per man hour.
- **65 square feet of installed R-Control SIP per man hour.**



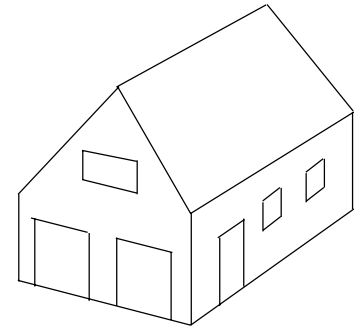
R-Control SIP - Structure • Sheathing • Insulation - All In One



Labor Case Study 3

Project: Labor time estimate for the setting of R-Control SIPs for wall and roof panels used to build the structural and insulated envelope of a 28' x 22' structure.

R-Control SIPs: Panels were supplied from factory: Cut to length, width, and gable configuration. Door and window openings were cut. Spline and plate pockets were factory cut.



Scope of work - Walls:

1. Treated lumber at top of concrete for capillary break, as in SIP-104.
2. Sill plate was installed top of treated plate, as in SIP-104.
3. R-Control SIP was set over sill plate, as in SIP-104.
4. Panel to panel connection was done using block spline, as in SIP-102g.
5. Corner connection was done, as in SIP-103.
6. Door, window openings field plated, as in SIP-114 and SIP-115.
7. Four (4) man crew was used to hand set panels and execute details.



Results - Walls

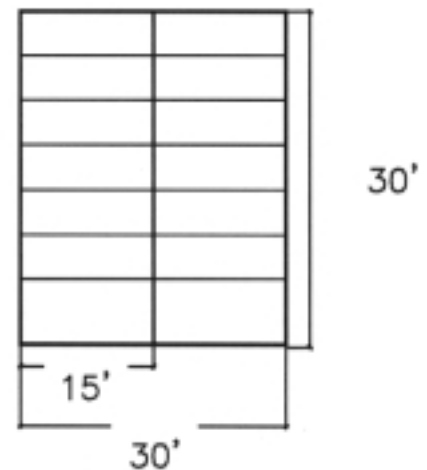
- Four (4) men spent three (3) hours or twelve (12) man hours to set 100 lineal feet of wall.
- 8.33 lineal feet of installed R-Control SIP per man hour.
- **84 square feet of installed R-Control SIP per man hour.**

Scope of work - Roof:

1. Preparation of R-Control SIP roof panels on ground, block spline male side installed, as in SIP-102g.
2. Attachment at eave wall, as in SIP-102g.
3. Attachment at gable wall, as in SIP-122c.
4. Attachment at ridge, as in SIP-121a.
5. Eave and gable edge plating, as in SIP-119b and SIP-119d.

Results - Roof:

- Preparation: Two (2) men spent one (1) hour to install 180 lineal ft. of block spline in 4' wide x 15' long roof panels, as in SIP-102g.
- 90 lineal feet of spline per man hour.
- Two (2) men on roof, one (1) man on the ground, set 900 sq. ft. of roof in two hours (2) hours, six (6) man hours, plus two (2) man hours prep.
- Two (2) hours of crane time.
- **113 square feet of installed R-Control roof panels per man hour.**



Statement: Labor hours described in this bulletin are specific to the project and conditions presented. Installation times will vary due to panel fabrication, details used, site and weather conditions, equipment used, number of laborers, and laborer/contractor experience. R-Control is a registered trademark of AFM Corp., Excelsior, MN. Copyright AFM Corp. 1/2000.